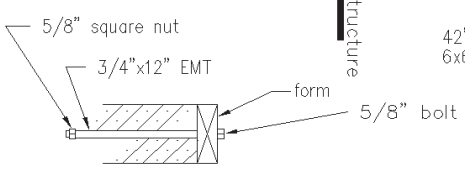
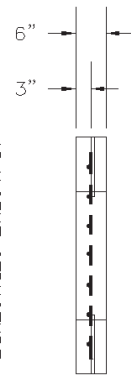
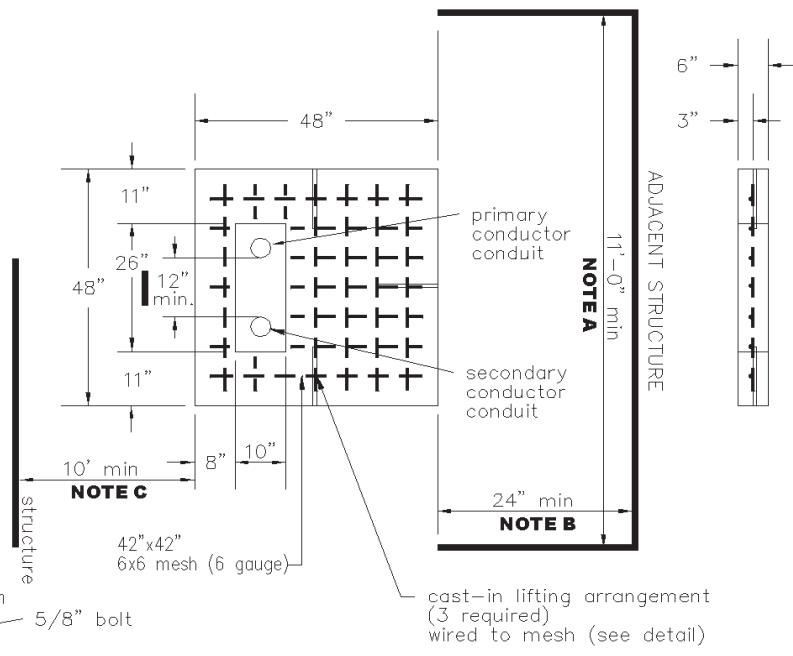


Steel reinforcing bar req'd			
bar	quantity	size	length
⊕	10	4	45"
⊗	2	4	28" 12"
⊙	2	4	6"



Pad Using Reinforcing Rods

- NOTE A:**  
A minimum width of 11' working space between structures will be required for transformer installation and maintenance.
- NOTE B:**  
A 24" minimum dimension on one side of base requires a 60" minimum on the other side, but, either side may be 24".
- NOTE C:**  
A working clearance of 10' must be available in front of transformer door. Any fence or wall in front of transformer door less than 10' away must be removable or openable.



Detail for Casting-in Lifting Arrangement

Pad Using Reinforcing Mesh

Premolded concrete base 1-phase transformer pad Stock No. 453-120  
 Concrete required - approximately 7 cubic feet  
 Concrete shall be air entrained using a fly ash mix and test 4500 psi at 28 days. 3/4" maximum rock size.

**COMMERCIAL UNDERGROUND DISTRIBUTION 1-PHASE TRANSFORMER PAD**

DWG REV: 10/30/06 DWG: 700-101